



UNLOCK 2.0

GUIDELINES FOR
PHASED REOPENING

ACTIVITIES NOT PERMITTED



Schools, colleges, educational & coaching institutions to remain closed till 31 July, 2020



International air travel of passengers, except as permitted by Home Ministry



Metro Rail



Cinema halls, gymnasiums, swimming pools, entertainment parks, theatres, bars, auditoriums, assembly halls & similar places



Social/ political/ sports/ entertainment/ academic/ cultural/ religious functions & other large congregations



UNLOCK 2.0

GUIDELINES FOR
PHASED REOPENING



ACTIVITIES PERMITTED

*Outside Containment Zones



Training institutions of Central & State Govts to function from 15 July, 2020; SOP to be issued by Deptt. of Personnel & Training



Domestic flights & passenger trains to be expanded in a calibrated manner



Online/distance learning continue to be encouraged



No restriction on inter-State & intra-State movement of persons & goods. No separate approval/ e-permit required for such movements



UNLOCK 2.0

GUIDELINES FOR
PHASED REOPENING

NIGHT CURFEW



Movement of individuals to remain strictly prohibited between 10 pm to 5 am except for essential activities



Essential activities allowed include operation of industrial units, movement of persons & goods on National & State Highways, loading & unloading of cargo and travel of persons after disembarking from buses, trains and airplanes



Local authorities to issue orders such as **Section 144 of CrPC and ensure strict compliance**



UNLOCK 2.0

GUIDELINES FOR
PHASED REOPENING



LOCKDOWN LIMITED TO CONTAINMENT ZONES (1/2)



Lockdown continues to remain in force in the Containment Zones till 31 July, 2020



Containment Zones to be demarcated & notified on websites by District authorities



No movement of people in or out of these zones, except for medical emergencies & for maintaining supply of essential goods & services



Intensive contact tracing, house-to-house surveillance & other clinical interventions as required to be conducted



UNLOCK 2.0

GUIDELINES FOR
PHASED REOPENING

LOCKDOWN LIMITED TO CONTAINMENT ZONES (2/2)



Activities to be monitored by the State/UTs authorities & the guidelines for containment measures to be implemented



States/UTs to identify Buffer Zones outside containment zones, where new cases are likely to occur



States/ UTs, may prohibit certain activities outside the Containment zones, or impose such restrictions as deemed necessary



UNLOCK 2.0

GUIDELINES FOR
PHASED REOPENING



MOVEMENT OF PERSONS ALLOWED AS PER SOPs



Movement by **passenger trains and Shramik special trains**



Domestic passenger air travel



Movement of Indian Nationals stranded outside the country and of specified persons to travel abroad



Evacuation of **foreign nationals**



Sign-on and Sign-off of **Indian seafarers**



UNLOCK 2.0

GUIDELINES FOR
PHASED REOPENING

PROTECTION OF VULNERABLE PERSONS



Persons above 65 years of age, persons with co-morbidities, pregnant women, and children below the age of 10 years advised to stay home



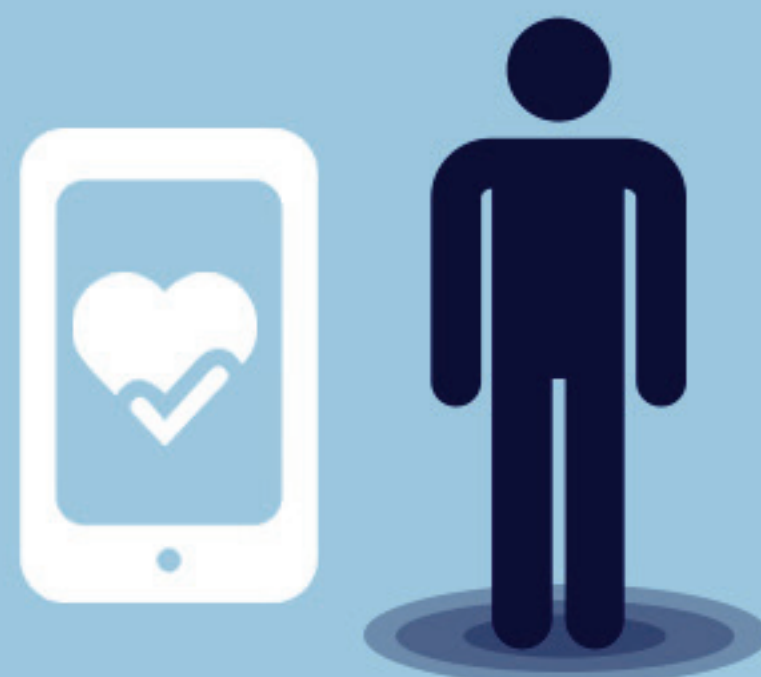
Except for **essential and health purposes**



UNLOCK 2.0

GUIDELINES FOR
PHASED REOPENING

USE OF AAROGYA SETU APP



Aarogya Setu **enables early identification of potential risk of infection**, and thus acts as a shield for individuals and the community



Employers at offices & workplaces should ensure **Aarogya Setu is installed by all employees**, on a best effort basis



District authorities **may advise individuals to install Aarogya Setu** & regularly update their health status on the app



UNLOCK 2.0

GUIDELINES FOR
PHASED REOPENING

STRICT ENFORCEMENT OF GUIDELINES



States/UTs shall not dilute the guidelines

issued under the Disaster Management Act, 2005, in any manner



All the District Magistrates shall strictly enforce the Unlock 2.0 measures

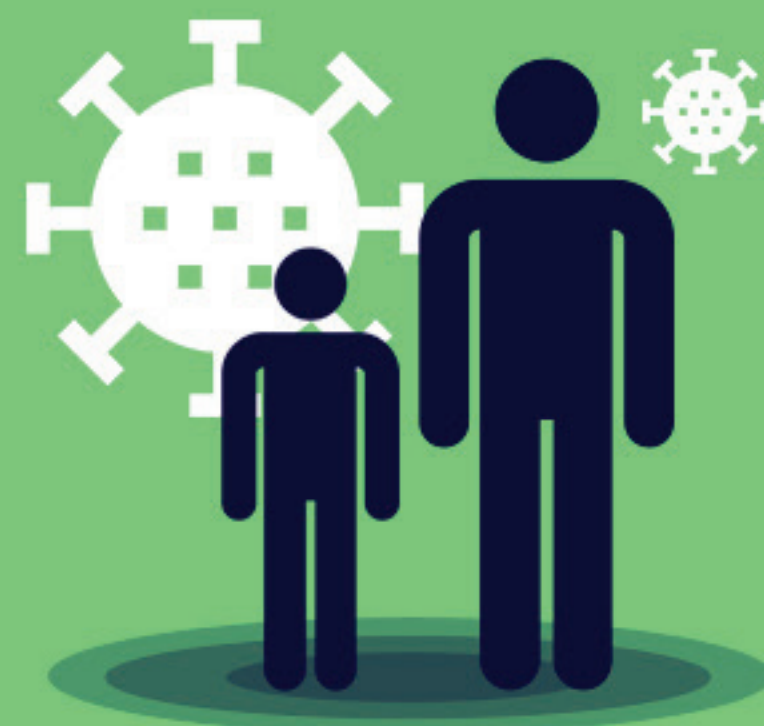


Any person violating the Unlock 2.0 measures liable to be proceeded against as per provisions of **Section 51 to 60 of Disaster Management Act, 2005, besides legal action under Section 188 of IPC, and other legal provisions as applicable**



UNLOCK 2.0

GUIDELINES FOR
PHASED REOPENING



NATIONAL DIRECTIVES FOR COVID-19 MANAGEMENT (1/2)



Wearing of face cover is compulsory in public places, in workplaces, and during transport



Individuals must maintain a **minimum distance of 6 feet** (2 gaz ki doori) in public places

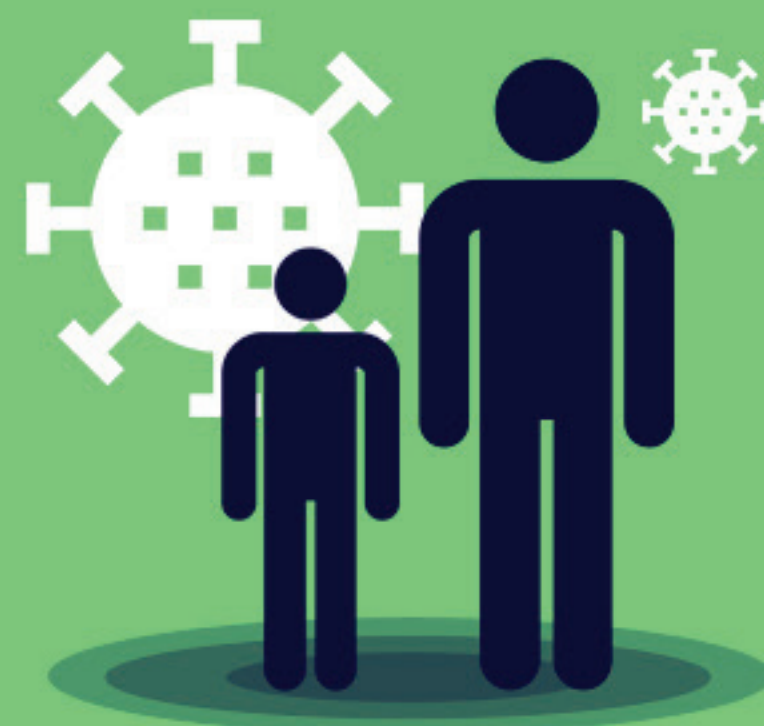


Shops to ensure physical distancing among customers



UNLOCK 2.0

GUIDELINES FOR
PHASED REOPENING



NATIONAL DIRECTIVES FOR COVID-19 MANAGEMENT (2/2)



Large public gatherings/congregations
continue to remain prohibited

- **Marriage related gatherings :**
Number of guests not to exceed 50
- **Funeral/ last rites related gatherings :**
Number of persons not to exceed 20



Spitting in public places punishable with fine,
as may be prescribed by State/UT local
authority in accordance with its laws, rules or
regulations



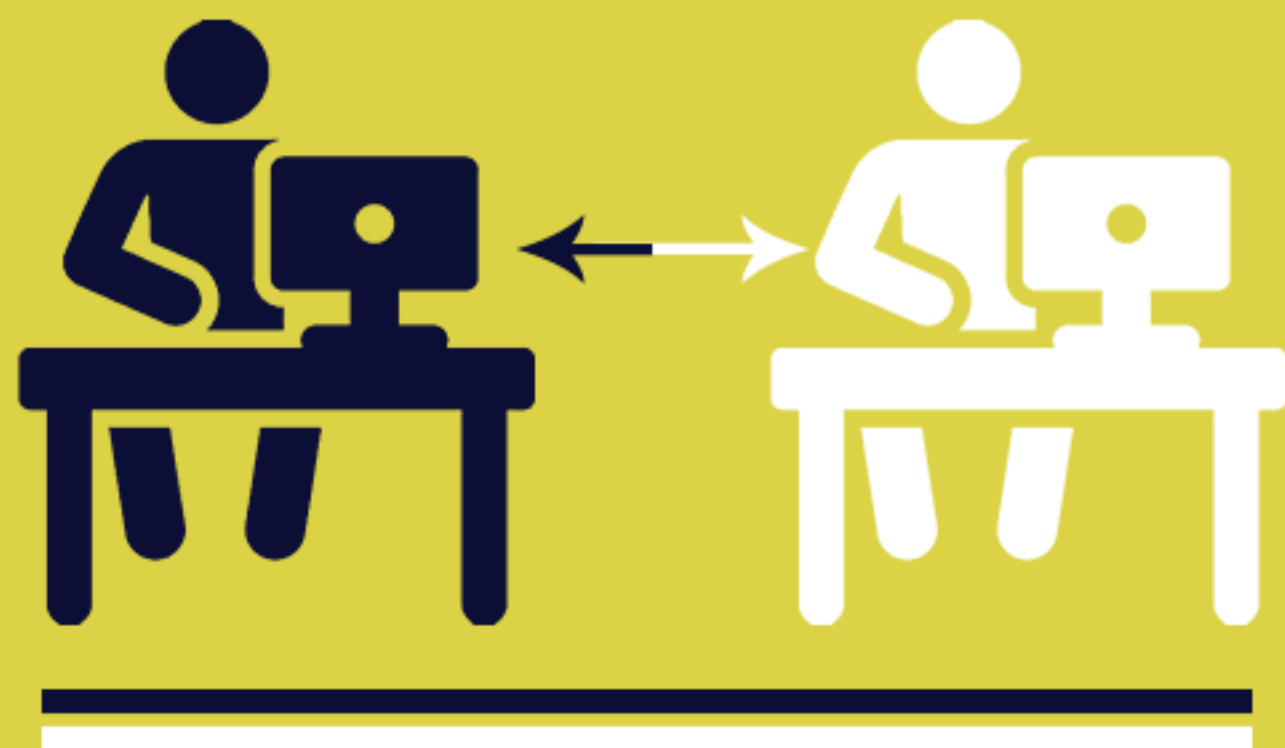
**Consumption of liquor, paan, gutka, tobacco
etc.** prohibited in public places



UNLOCK 2.0

GUIDELINES FOR
PHASED REOPENING

NATIONAL DIRECTIVES FOR WORKPLACES



Work from home (WfH) should be followed as far as possible



Staggering of work/ business hours to be followed in offices, work places, shops, markets and industrial establishments



Thermal scanning, hand wash & sanitizer at all entry & exit points & common areas



Frequent sanitization of the entire workplace, common facilities and all points e.g. door handles etc. to be ensured



All persons in charge of workplaces **to ensure adequate distance between workers**, adequate gaps between shifts, staggering lunch breaks, etc.